

COMPANY PROFILE



B.E.A.R CONSULTANTS.Ltd

21 KG 2 Avenue
Kimihurura, Kigali, Rwanda
RW:(250) 78300270, SA:(27)782881173
RW:(250) 788303576
info@bearltd.rw
www.bearltd.rw



TABLE OF CONTENTS

01. Welcome note
02. Founder and CEO
03. Projects Managers
04. Value and Service
05. Approach, Vision, Mission
06. Convention Center, Radisson Blue & IT - Office Park
07. Grand Pensions Plaza
08. Rwanda Revenue Authority
09. Resort und Business Hotel am Lake Kivu
10. Ecobank
11. Serena Hotel Gisenyi
12. Green Hills Academy (Nursery)
13. RSSB Twin Towers
14. Elevate Boutique Hotel

WELCOME NOTE

It is our pleasure to have you go through our company profile!

Welcome to B.E.A.R consultants and Project Management.

Among the first distinctive feature one will encounter in Rwanda after the scourge of the 1994 Genocide, is the ever changing skyline of the country especially in Kigali. As a firm, we are proud to be at the heart of rebuilding Rwanda.

Since its inception in 2000, B.E.A.R Architects has realized exponential growth in terms of clientele and projects handled. We pride in our highly qualified and skilled staff, both local and international, who give us an edge in this ever dynamic environment we live in.

B.E.A.R Architect endeavours to be part of Rwanda achieving her 2050 vision. We would like to echo the tenets of the vision laid by the country's able leadership. We hope to part and parcel to inspire and contribute to Rwanda's endeavors to a beacon of hope and change.





KAYIRANGA MUVARA BERTRAND

Founder and Managing Director

Counselor member of EA Association of Architect.

We look forward to a fruitful collaboration ahead. We hope you will find this profile enjoyable, practical and relevant. Please visit our latest website for further reference and response via email.

Thank you, Bertrand Kayiranga.

VALUE AND SERVICES



BEAR, Bureau d'Etudes d'Architecture du Rwanda's vision is rebuilding its country into a modern and progressive nation. With different architectural activities spread across, East Africa and the rest of the world, B.E.A.R has assembled a team of experts and professionals in various fields, such as:

- *Architecture and Civil Engineering*
- *Electromechanics*
- *Quantity Survey*
- *Project Management*
- *Surveillance and work technical control*
- *Furnitures Analysis*
- *Feasibility Studies*
- *Interior Design and Landscaping*

Approach

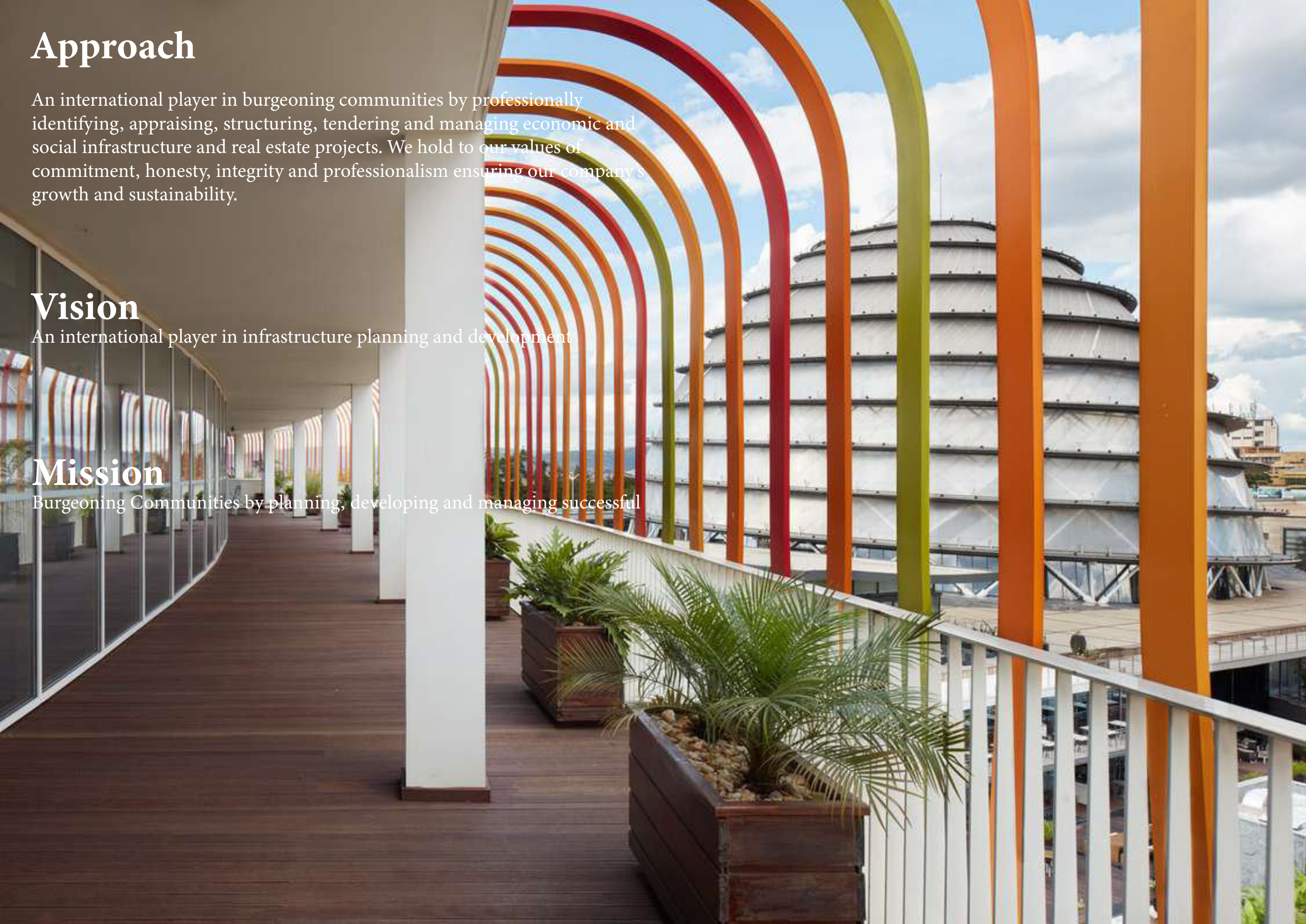
An international player in burgeoning communities by professionally identifying, appraising, structuring, tendering and managing economic and social infrastructure and real estate projects. We hold to our values of commitment, honesty, integrity and professionalism ensuring our company's growth and sustainability.

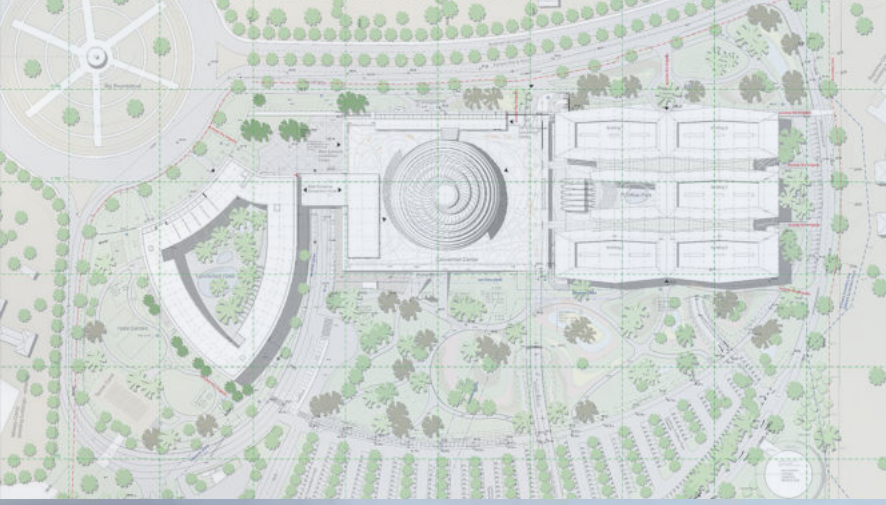
Vision

An international player in infrastructure planning and development

Mission

Burgeoning Communities by planning, developing and managing successful





Kigali Convention Complex

Kigali, RW

The Kigali Convention Complex opened after more than seven years of construction time by his excellence president Paul Kagame on behalf of the African Union Summit in 2016.

KCC is the most revolutionary project in Rwanda, on its way to becoming the highest-ranked event's venue in East Africa. The three fundamental functional units are located in the center, which is surrounded by a park.

In Partnership with **SPATAIL SOLUTIONS GmbH**



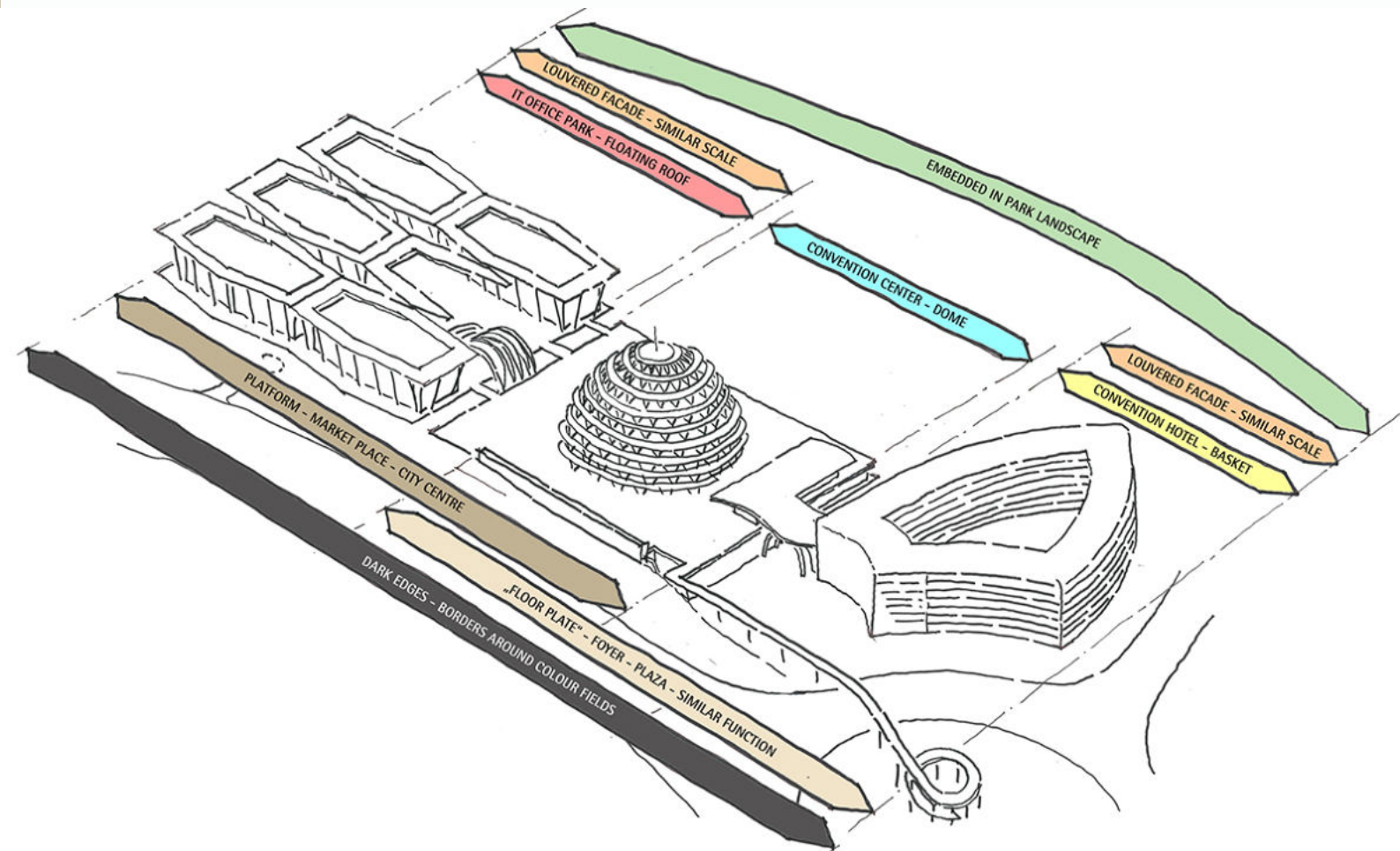
IT - Office Park

Kigali, RW

The IT Office Park is a fundamental element of the Kigali Convention Complex. Five individual four-floor buildings gather around a generously sized open area that opens up to a cupola view of the Convention Center. The rooms between the individual buildings are partially equipped with translucent roofs, which serve as shields against rainfall, direct sun and regulate room temperature.



SPAYAIL SOLUTIONS GmbH, a German architectural firm along with its local partner BEAR, is involved in one of the most modern projects in Africa. The development includes a 5-star hotel, ultra-modern conference centre, an exhibition floor and an amphitheatre built in the traditional Rwandan format.



City
Kigali

Client
Ultimate Concepts Limited

Contract
Design & Build Turnkey

Construction Area
81,044 m²

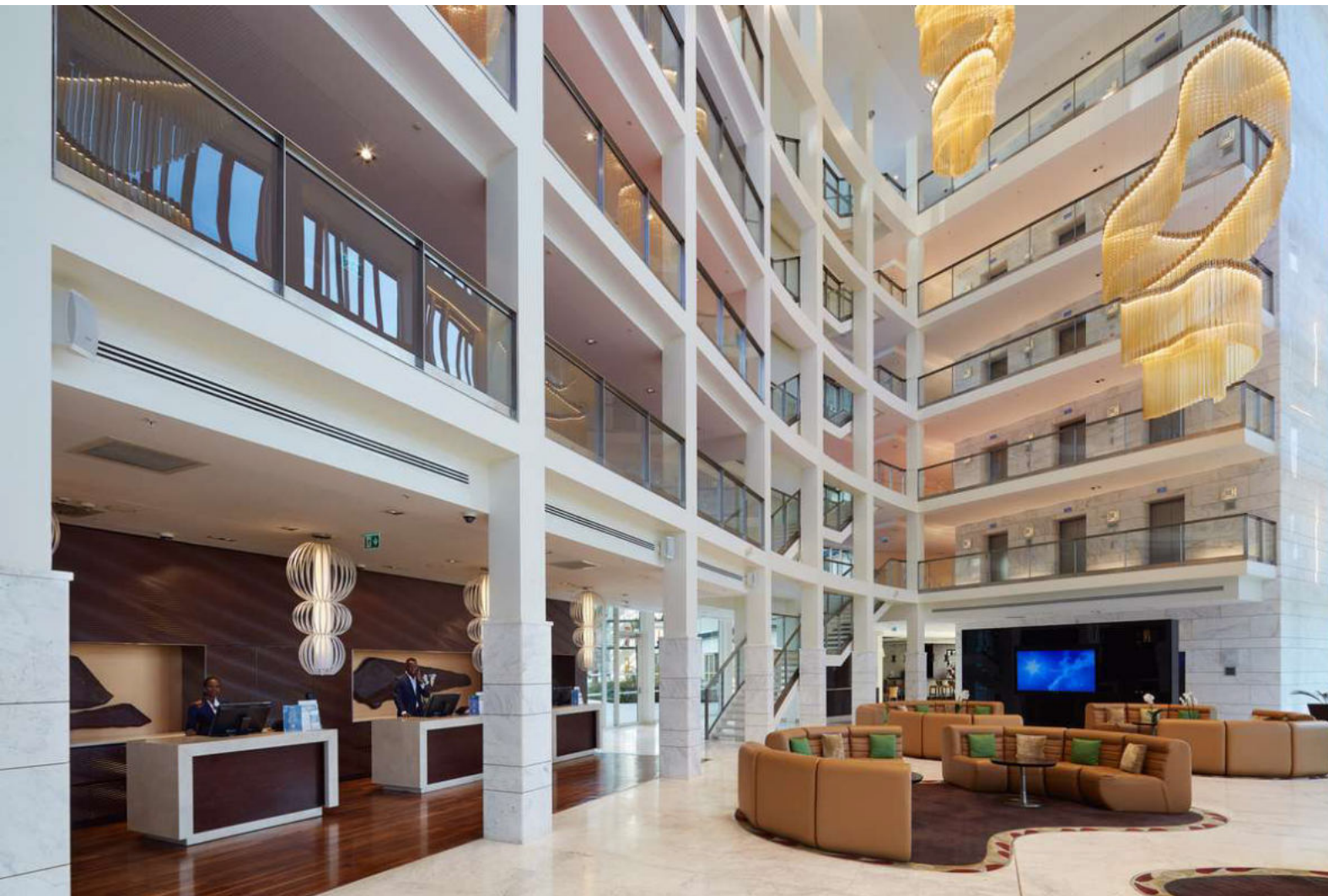
Site Area
130.000 m²

Starting Date
May 2015

Completion Date
April 2016

Duration
11 months





Kigali Convention Center had been designed for realization of multi-purpose activities and events, to create a landmark for ever-growing economy of Rwanda. Previously, despite limited number of facilities, Rwanda managed to attract several organizations.

Even before completion of the Project there was a long line-up of events, one of which being African Union Summit of 2016. This level of importance had a direct impact on material selections and workmanship quality.

At the end of the day, this project; functions as a "Pride" and "Proof" of this country's ability to "Perform" no matter how big/many difficulties they have faced with.

Grand Pensions Plaza

Kigali, RW



Greening existing public building stock in Rwanda, is a project initiated by The Global Green Growth Institute (GGGI) in 2020 with support from partners including the Ministry of Environment, Ministry of Infrastructure (MININFRA) and Rwanda Housing Authority (RHA) to improve the performance of the existing public building stock in Rwanda based on green building parameters.

The project built on the Rwanda Green Building Minimum Compliance System is part of Rwanda Building Code 2019 and aims to provide pathways to green existing public buildings in Rwanda.

The purpose of this report on ‘Rapid Building Performance assessment of Nyarugenge Pension Plaza (NPP), Kigali, Rwanda’ is to provide the building owners and facility manager of NPP, an opportunity to understand how their building is constructed, performing on key resource efficiency parameters (energy, water and waste) by benchmarking against similar facilities within comparable context, and suggest a list of recommendations for improvement and the associated cost savings convert the existing building into a green building.

This is the first of a series of technical assessment reports that will be produced by GGGI Rwanda on an existing public building.

Rwanda Revenue Authority

Kigali, RW



Located near the roundabout engulfing the Kimihurura Park, this building is home to government institutions and administrations including the Rwanda Revenue Headquarters, The Office of the Auditor-General and The Electoral Commission.

The building covers a total area of 20,000 sqm including a theatre facility and overlooks the sprawling city. During the evening though, it offers its best view.

When the building is fully lit, it is a magnificent sight displayed to portray the new and exciting evolution of Kigali.



With the construction of the combined Resort and Business Hotel on Lake Kivu, Rwanda plans to contribute to the strengthening of the provinces. The hotel consists of two parts: A filigree pier provides docking space for land as well as sea vessels. Here you find the reception area, an airy bar as well as conference rooms at garden level.

Resort und Business Hotel am Lake Kivu

Kibuye, RW

ECOBANK

Kigali, RW



ECOBANK building is located in central business district of the city of Kigali. The building is located in a favorable environment where other services like banks, markets, Hospitals, etc.

The building has 9 floors on 648sqm, developed with emphasis on giving Kigali a clean modern look.

Ecobank Rwanda was established on 6 July 2007, when Ecobank International acquired the Bank of Commerce, Development and Industry (BCDI), a commercial bank in Rwanda that had failed. At the time of acquisition, BCDI had a 46 percent non-performing loan profile, was under-capitalized and suffered from poor governance and inadequate operational controls.

the iconic Ecobank headquarters. It consists of multi-stories of office space, conference hall and multi-function spaces.

At the heart of the city, the Serena Hotel, Formerly the InterContinental Hotel, is the first ever five star hotel to be completed in Rwanda. It consists of Presidential, deluxe and standard suites, two restaurants, a pub and other high level amenities such as state of the art conference facilities. An exquisite structure fit to grace any 21st century City.

Serena Hotel Gisenyi

Kigali, RW



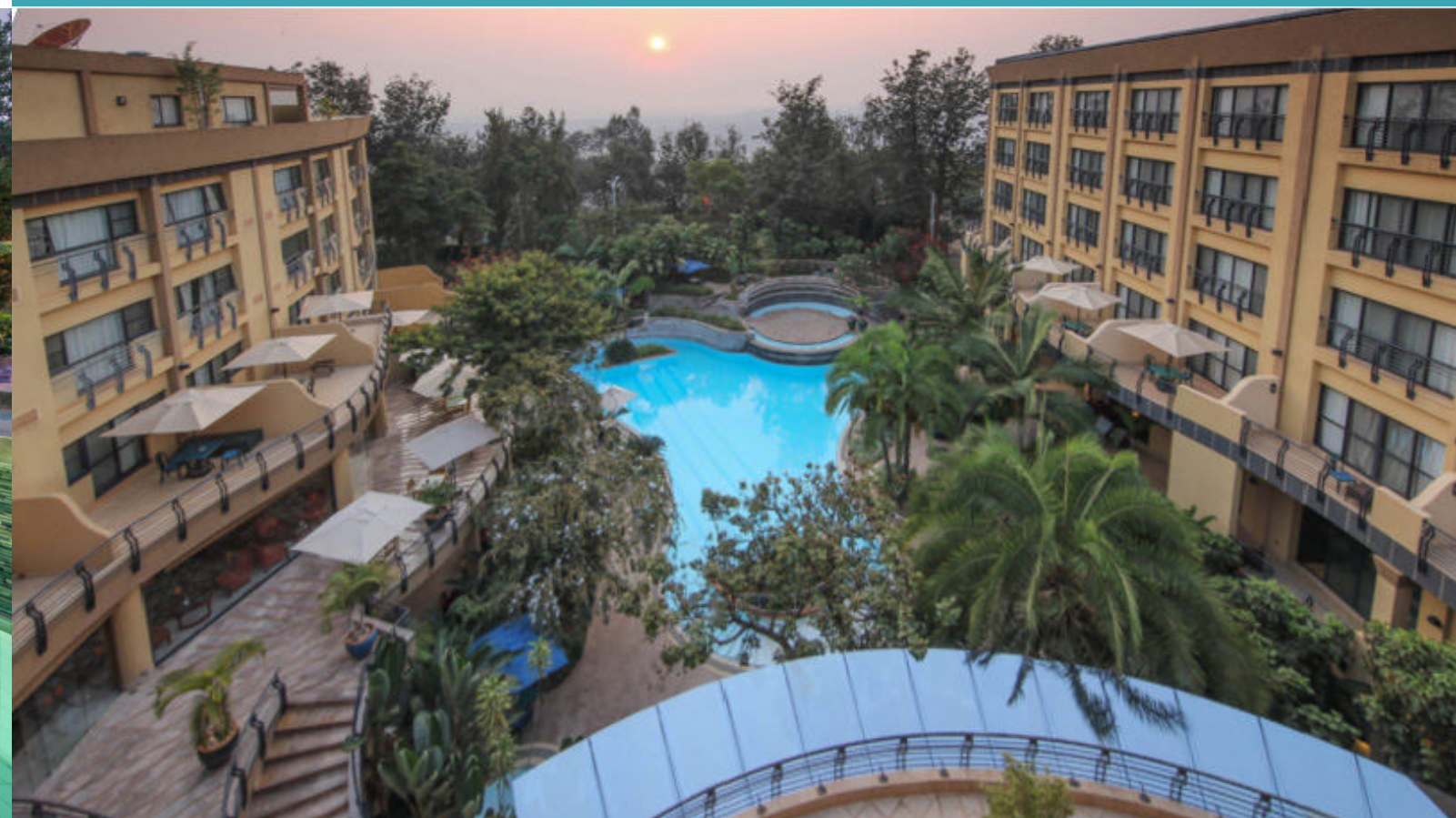


Serena Hotel kigali

Kigali, RW

At the heart of the city, the Serena Hotel, formerly the InterContinental hotel, is the first ever 5-star hotel to be completed in Rwanda. It consists of Presidential, deluxe and standard suites, two restaurants, a pub and other high level amenities such as state-of-the-art conference facilities. An exquisite structure fit to grace any 21st century city.









Green Hills Academy is an international school located in Kigali, Rwanda. The project is to design the nursery school of Green Hills Academy with a total number of pupils as 360 pupils with 18 classes, a kids Centre, library, Offices, other secondary spaces, playgrounds and more. The project is on a 8,400 m² land with the design's aim being to create a space that is as function, educative and stimulating for the preschoolers.

Green Hills Academy (Nursery)

Kigali, RW





Akagera Game Lodge is the ideal base to experience the only Big Five reserve in Rwanda in Akagera National Park. The lodge has 59 air-conditioned rooms with en suite bathrooms, dining & an outdoor pool in a relaxed hotel with lake views in Akagera National Park.

Akagera Game Lodge

Kigali, RW



RSSB Twin Towers

Kigali, RW

Located at 'Payage' in the City of Kigali. The buildings are located in a favorable environment where other services like banks, markets, Hospitals, etc. The structure has been developed with emphasis on giving Kigali a clean modern look. Developed by the National Health Insurance Agency,

Rwanda Social Security Board (RSSB), as its headquarters. It will consist of multi-stories of office space, conference hall and mezzanine floors to accommodate the newest conference and shopping experiences.





Police Headquarter

Kigali, RW

The new facility, which has 37 office rooms, was constructed in a space of 12 months, on a 6,727 square metre piece of land.

It has two conference halls, a police station with two self-contained holding cells for male and female suspects and a state-of-the-art IT interview room.



Oasis Residential Estate

Kigali, RW

Oasis Residential Estate is an on going project on 27 residential home, located on the east part in kigali city, one the most safe neighbor in the city.

Each home is full 4 self-content bedrooms, 2 main living room, 1big size kitchen with an outdoor balcony and count-yard with as swimming pool space available







Elevate Boutique Hotel

Kigali, RW

In Partnership with *GHA International*





Residing in the Nyarutarama residential areas, it is surrounded by a prominent area for diplomats, businessmen and holiday makers. It is also within walking distance of the golf course for enthusiasts of the game. The hotel is equipped with, an elegant restaurant, barbecue, an outdoor pool, a bar and plenty of recreational areas for children. In certain units, the hotel offers a view of the pool, garden and the city. Couple the aforementioned with an excellent interior design, Elevate Suites Hotel offers a sublime stay all around.



Client
Private Sector Federation, Rwanda

Area
37,000m²

Status
competition, 1st prize

In addition to its function as an international trade fair location, RITEP fulfills a number of other requirements: It is a meeting place for national and international groups (ISANGANO Feasibility Study 2006), a place for the exchange of ideas and a cultural center.

RITEP Rwanda International Trade Fair and Exhibition Park
Kigali, RW

In Partnership with **SPACIAL SOLUTIONS GmbH**



Their purpose as public buildings characterizes the design of the RITEP exhibition halls: The spatial gradation also allows use during times when there are no exhibitions. The design makes the exhibition halls themselves a landscape element: based on the hilly landscape of Rwanda, three pairs of halls are lined up radially on the sloping site. With their curved roof, they become a landmark for Kigali.

RITEP Rwanda International Trade Fair and Exhibition Park
Kigali, RW

In Partnership with **SPACIAL SOLUTIONS GmbH**



RITEP Rwanda International Trade Fair and Exhibition Park
Kigali, RW

In Partnership with **SPACIAL SOLUTIONS GmbH**



When asked about your ideal idea of living in Africa, the keywords "private and protected living quarters" often come up. Designing such a neighborhood from scratch within Kigali offers the opportunity to create that "perfect" environment. Based on the traditional settlement structure of the Rwandan round villages, an ensemble is created that makes the public park an extension of the individual private gardens.

Residential Park

Kigali, RW

In Partnership with **SPACIAL SOLUTIONS GmbH**



Client
Tristar, Kigali

Area
7.35 ha

Status
design study

Although the residential units are economical, the houses convey the feeling of openness and spacious rooms. The community center in the center of the complex serves as a community building for special occasions within the residential area and strengthens the neighborhood identity.

Residential Park

Kigali, RW

In Partnership with **SPACIAL SOLUTIONS GmbH**



surface
1400m²

status
planning complete

Residential Park

Kigali, RW

In Partnership with **SPACIAL SOLUTIONS GmbH**



Architectural fusion of various African cultural elements embedded in the sloping terrain

builder

African head of state

Residential Park

Kigali, RW

In Partnership with **SPACIAL SOLUTIONS GmbH**



Client
Rwanda Investment & Export Promotion Agency

Area
9,633 m²

Status
design study

African Heart is a small resort with the highest standards of comfort and safety in the middle of Kigali.

The dome construction with the characteristic arched entrance, as well as the outdoor facilities with intersecting circular courtyards, are based on the model of the Rwandan royal palace. The result is an ensemble with a distinctive Rwandan identity, grouped around a central square for cultural events.

African Heart
Kigali, RW

In Partnership with ***SPACIAL SOLUTIONS GmbH***



Individual pavilions can be interconnected to form spacious suites. The space between the outer dome and a smaller, also dome-shaped structure inside accommodates bathrooms and service areas. In this way, the round interior remains completely undisturbed.

African Heart
Kigali, RW

In Partnership with **SPACIAL SOLUTIONS GmbH**